

AutoCAD Text Modifier Tutorial

Author: SkySof Software Inc.

Site: <http://www.skysof.com>

Email: kusluski@bellsouth.net

1. Introduction

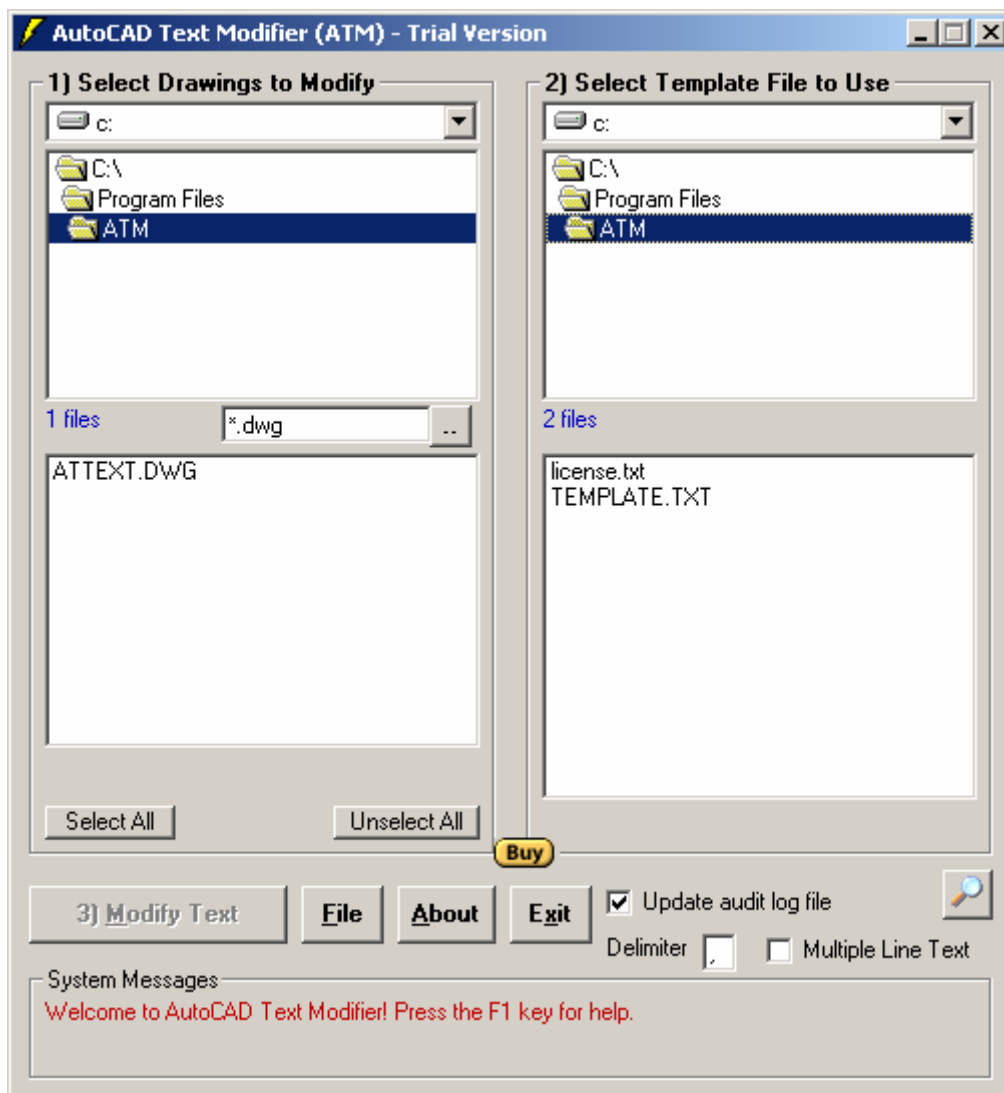
With AutoCAD Text Modifier (ATM) you can easily automate the process of modifying single and multiple line text objects in AutoCAD drawing files. Use ATM to delete text objects, clear text values, replace text values, find and replace text values, and set the case of text values (upper, lower, proper). ATM runs very quickly and can process thousands of drawing files with the click of only one button! ATM is compatible with AutoCAD drawing versions 2000 and above. An individual user license is only \$99.95 and a site license (unlimited number of users per building) is only \$499.95. To order from RegNow go to

<https://www.regnow.com/softsell/nph-softsell.cgi?item=4459-51>

2. Running ATM

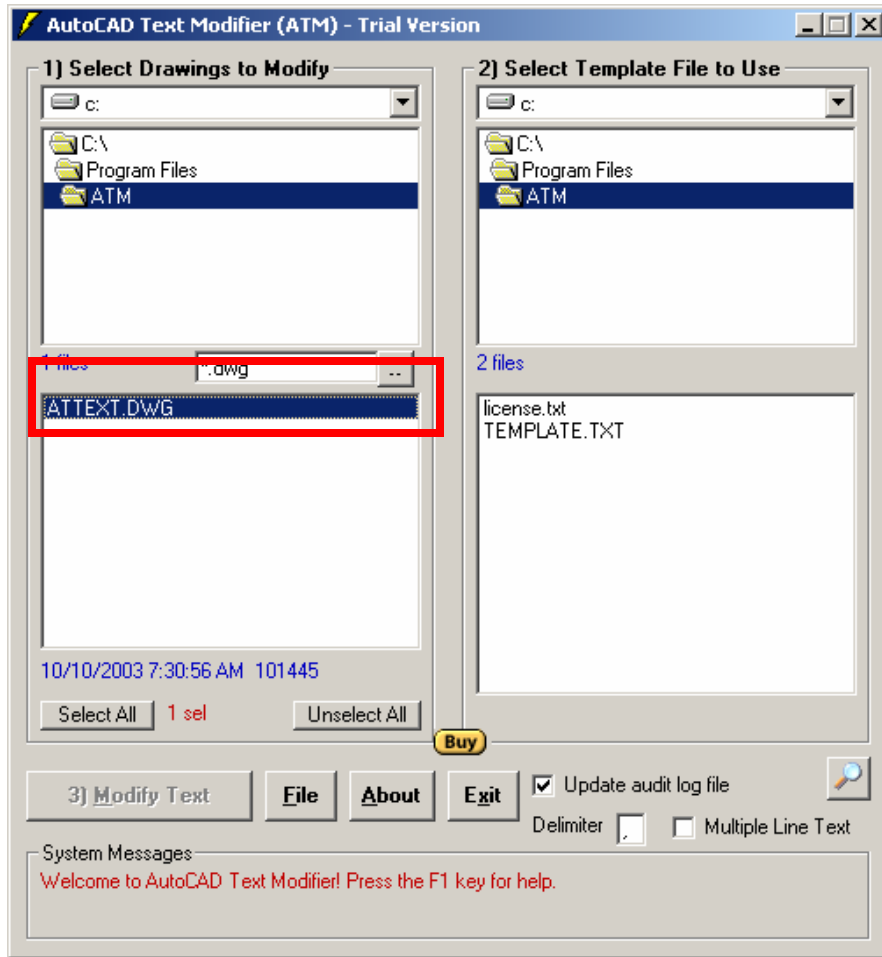
To load ATM click Window's Start Button > All Programs > AutoCAD Text Modifier

The name of the application executable file is ATM.EXE and is located in folder C:\Program Files\ATM

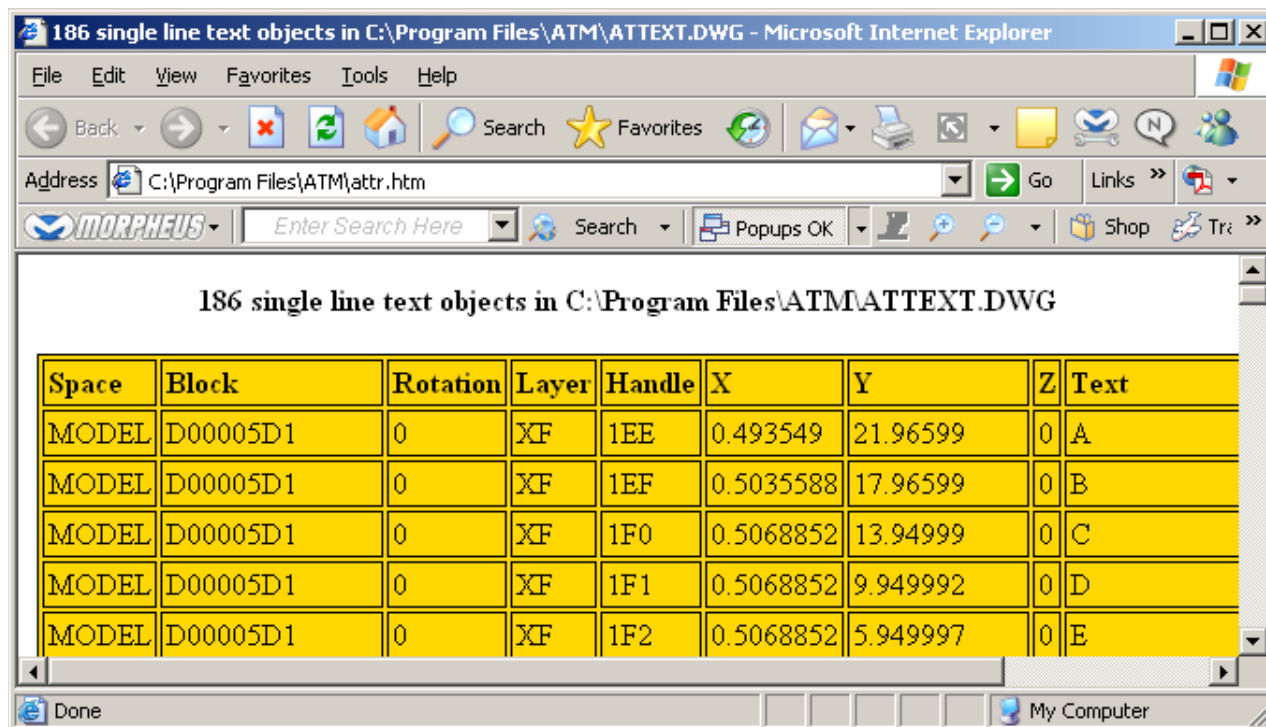


3. Viewing single line text values in an AutoCAD drawing (DWG) file

Double-click on the drawing name in the left window to create an HTML file of single line text values.

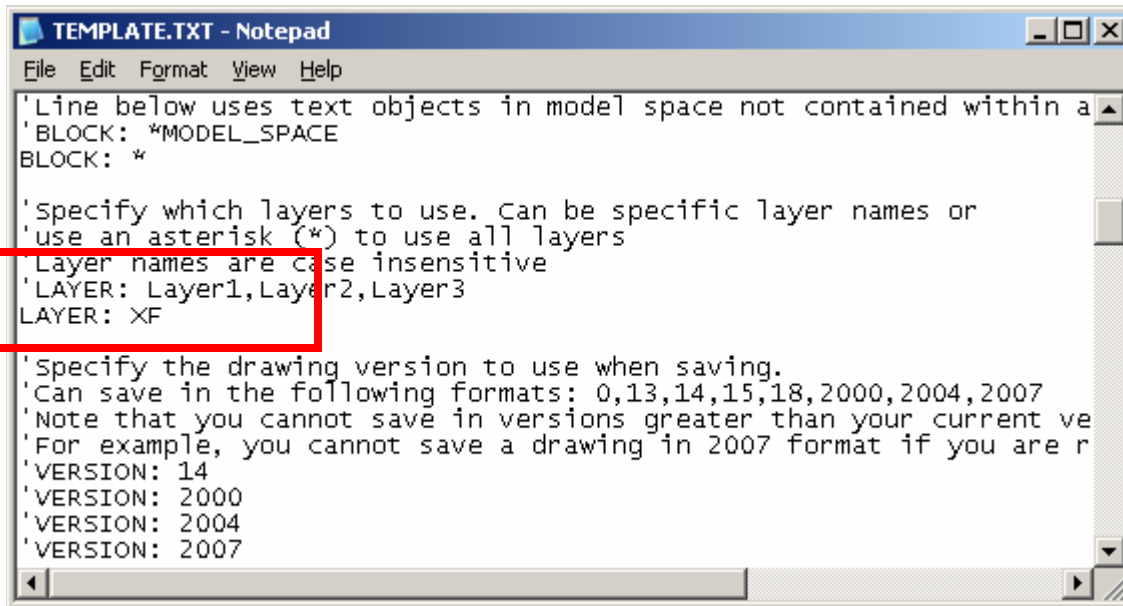


If single line text values exist in the drawing the HTML file will be created and opened in your default HTML file viewer (such as Internet Explorer). The text values are in the last column.



4. Finding and replacing text values

- a. Double-click on the file **TEMPLATE.TXT** in the right window to open it with your default text editor (such as Window's Notepad). This file contains information that ATM uses to process drawing files such as drawing filters and text commands. Find the section ***INPUT** at the top of the file and change **LAYER: *** to **LAYER: XF**

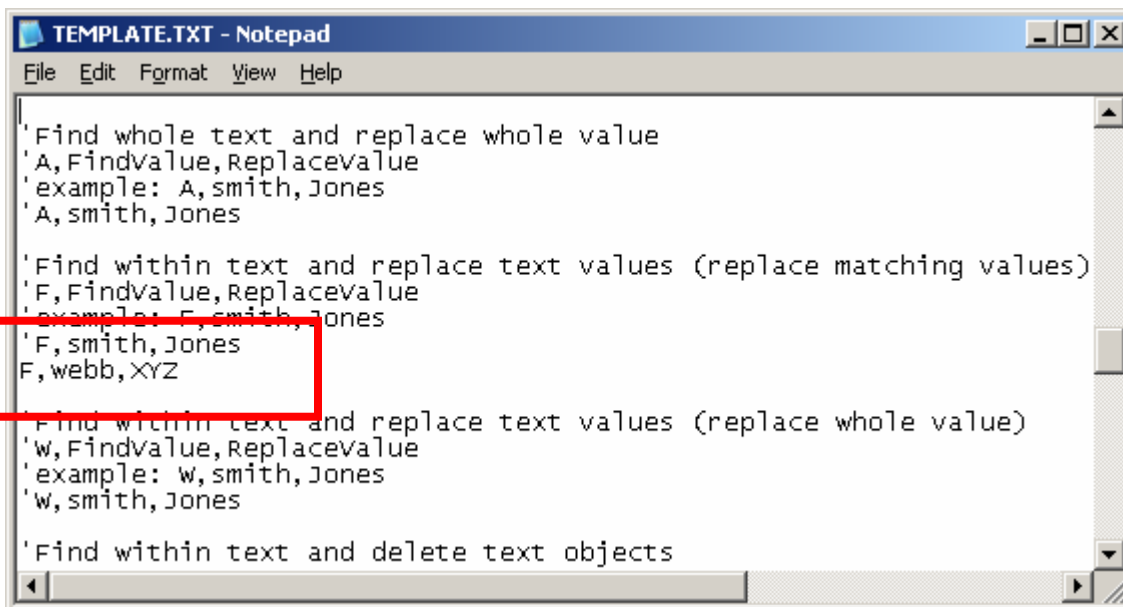


```
TEMPLATE.TXT - Notepad
File Edit Format View Help
'Line below uses text objects in model space not contained within a
'BLOCK: *MODEL_SPACE
BLOCK: *

'specify which layers to use. Can be specific layer names or
'use an asterisk (*) to use all layers
'Layer names are case insensitive
'LAYER: Layer1,Layer2,Layer3
LAYER: XF

'Specify the drawing version to use when saving.
'Can save in the following formats: 0,13,14,15,18,2000,2004,2007
'Note that you cannot save in versions greater than your current ve
'For example, you cannot save a drawing in 2007 format if you are r
'VERSION: 14
'VERSION: 2000
'VERSION: 2004
'VERSION: 2007
```

- b. Next, scroll down and find section ***COMMANDS** and locate section "Find within text and replace text values". Type in **F,webb,XYZ** to change all occurrences of 'webb' to 'XYZ'.



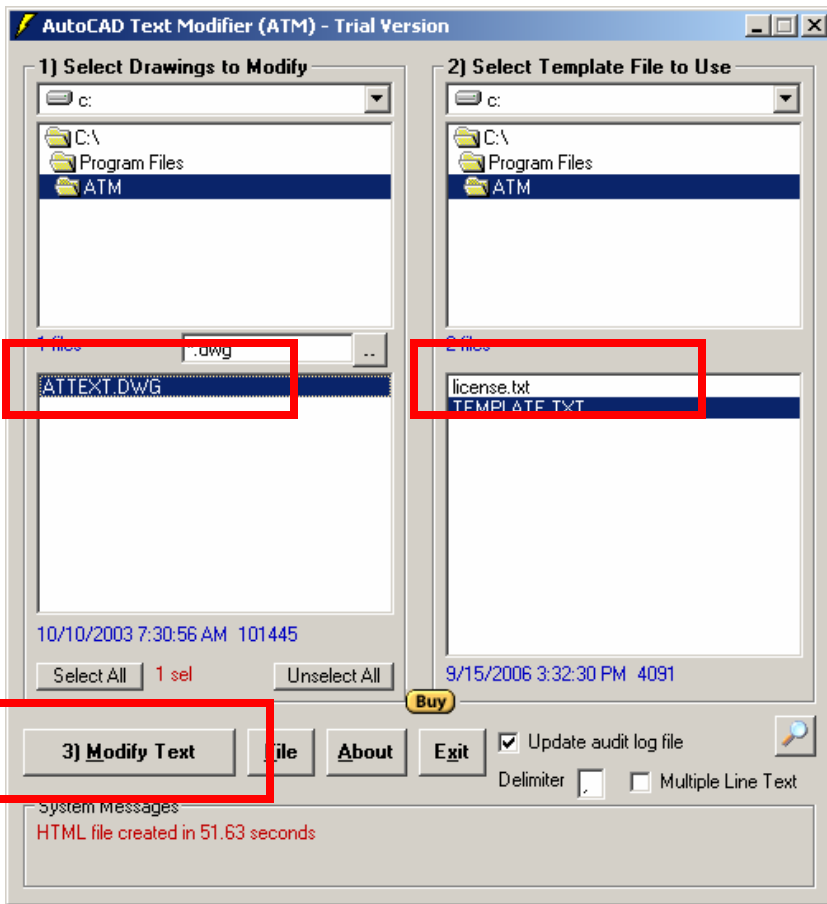
```
TEMPLATE.TXT - Notepad
File Edit Format View Help
'Find whole text and replace whole value
'A,Findvalue,Replacevalue
'example: A,smith,Jones
'A,smith,Jones

'Find within text and replace text values (replace matching values)
'F,Findvalue,Replacevalue
'example: F,smith,Jones
'F,smith,Jones
F,webb,XYZ

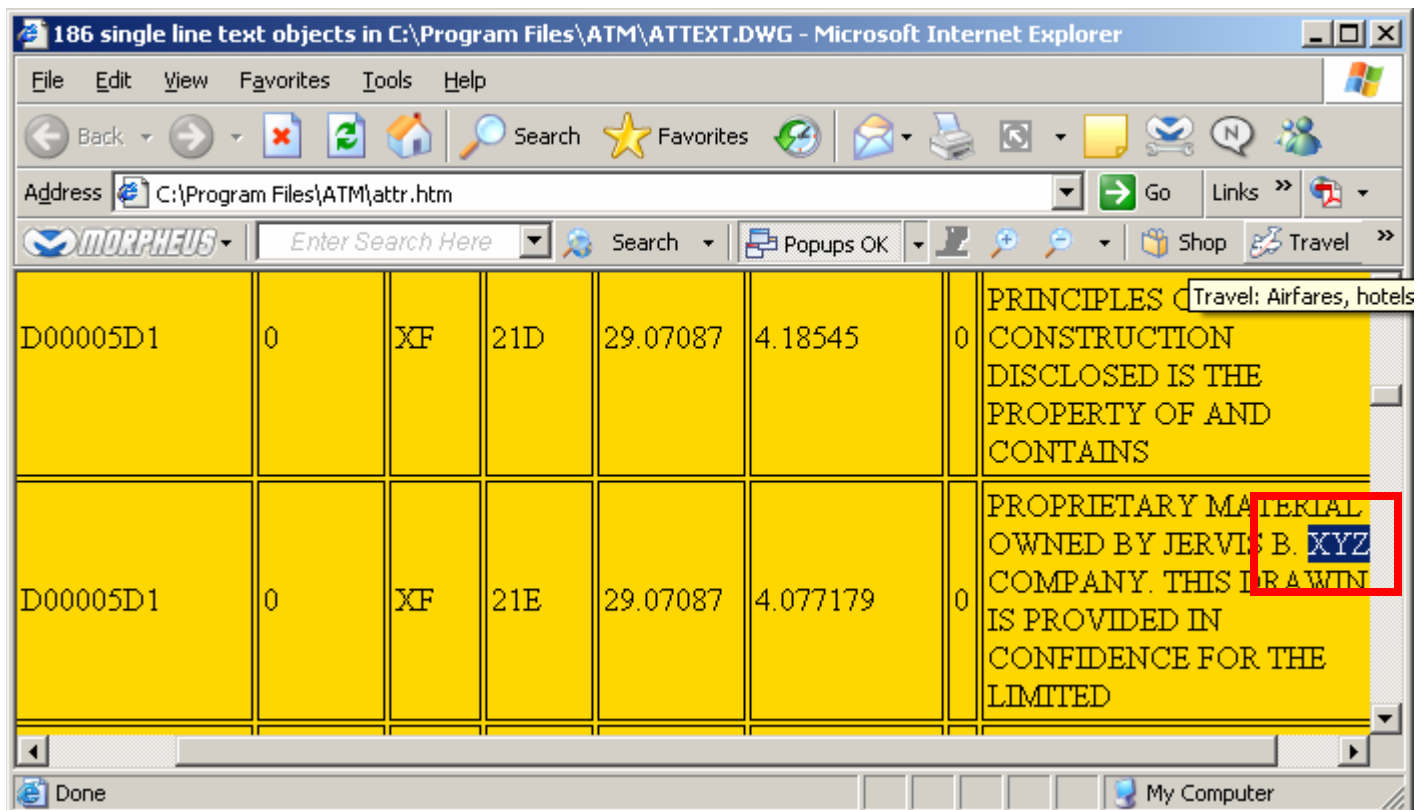
'Find within text and replace text values (replace whole value)
'w,Findvalue,Replacevalue
'example: w,smith,Jones
'w,smith,Jones

'Find within text and delete text objects
```

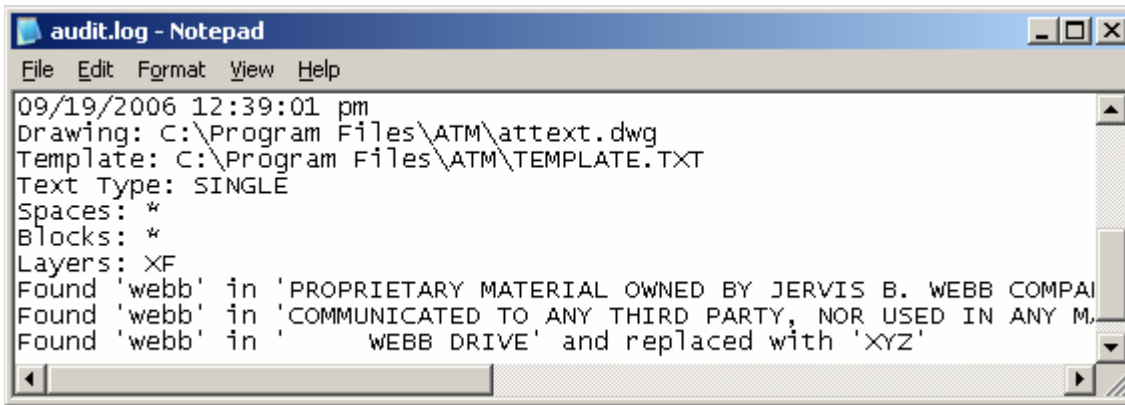
- c. Save and close the template file **TEMPLATE.TXT**. If using NotePad you can do this from the File Menu. You will now process an AutoCAD drawing file using the data you just set in the template file: Find single line text values containing 'webb' and replace it with 'XYZ' for drawing layer XF only. From ATM's screen select drawing **ATTEXT.DWG** and template file **TEMPLATE.TXT** then click the button **Modify Text**.



- d. In the System Messages frame at the bottom of the screen you should see “Text for 1 file(s) modified in n second(s).” Double-click on drawing **ATTEXT.DWG** to create an open an HTML file containing single line text values. Scroll to the last column to verify that the text values have been changed from “webb” to “XYZ” for layer XF.

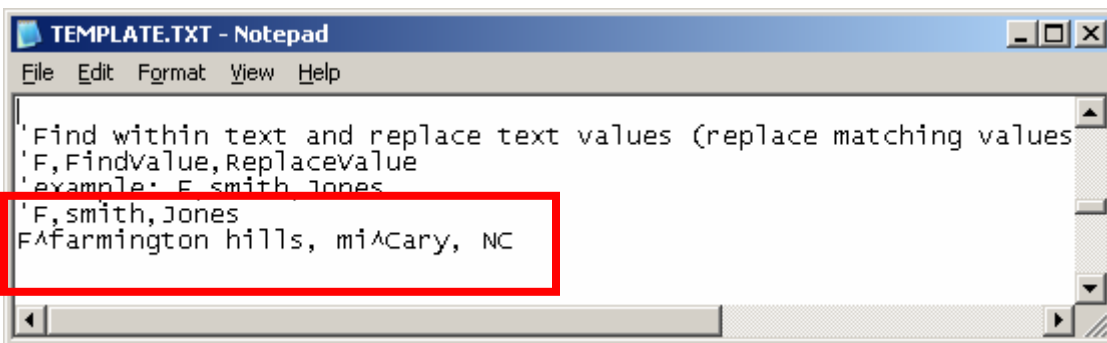


- e. Open audit file C:\Program Files\ATM\audit.log. This file is updated each time you modify text values in drawings with ATM. If you do not wish to update this file uncheck option “Update audit log file” near the bottom of ATM’s screen. Note that in the audit log file it lists the date and time the process was run, the drawing file affected, and the text values which were changed.

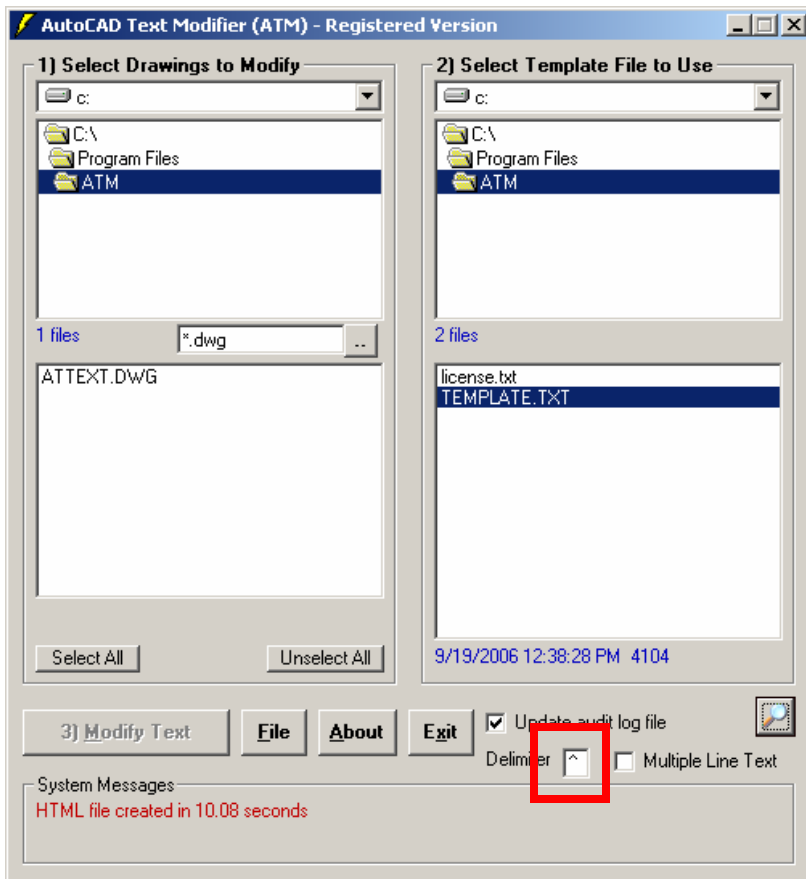


5. Processing multiple drawings with multiple template files using Drawing List Files (DLF)

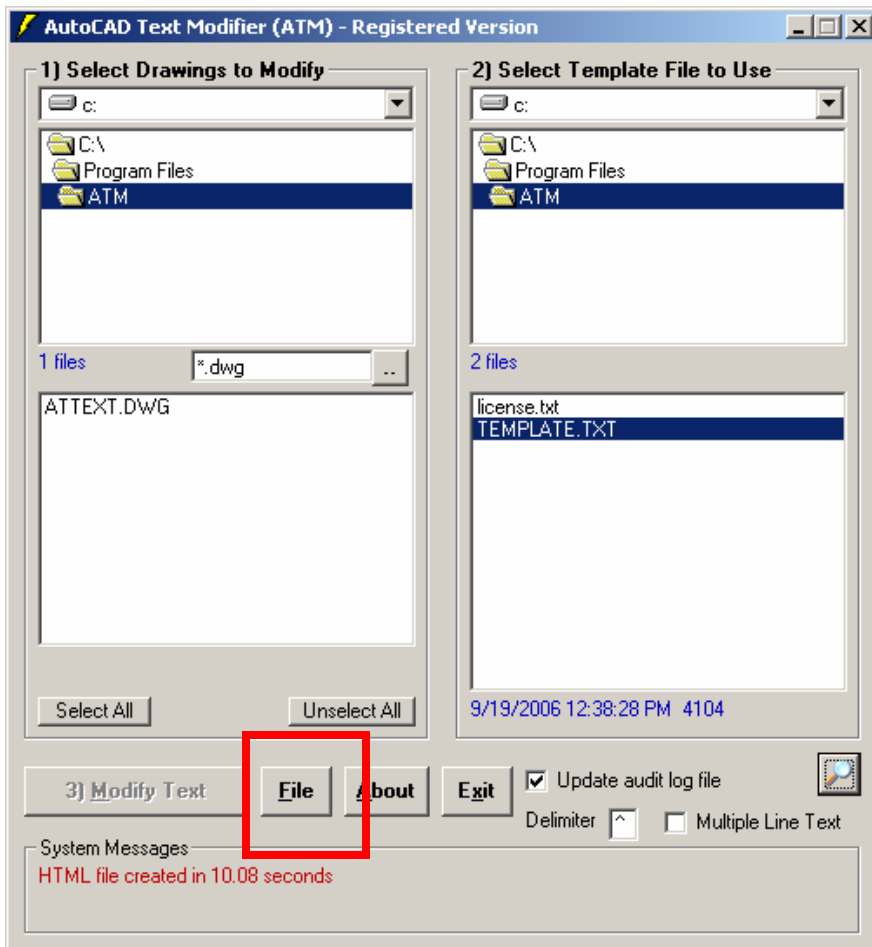
- a. Using DLFs you can easily modify text values in hundreds or even thousands of drawings by simply clicking a few buttons! In this demonstration we will find text value ‘Farmington Hills, MI’ and change it to ‘Cary, NC’. Double-click on the file TEMPLATE.TXT in the right window to open it with your default text editor (such as Window’s Notepad). Scroll down and find section ***COMMANDS** and type **F^farmington hills, mi^Cary, NC**. Notice that we are using the caret symbol as the delimiter because the text we are finding and replacing contains a comma.



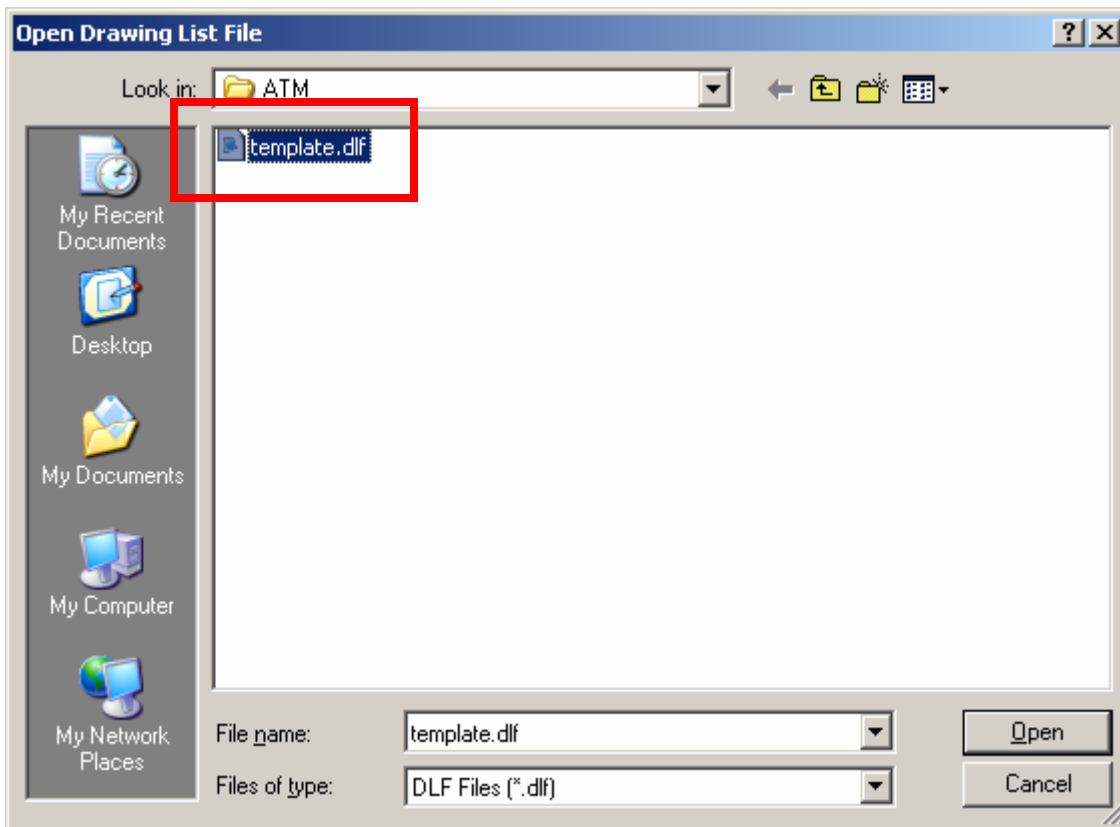
Because we are using a delimiter other than a comma we must set this on the main screen.



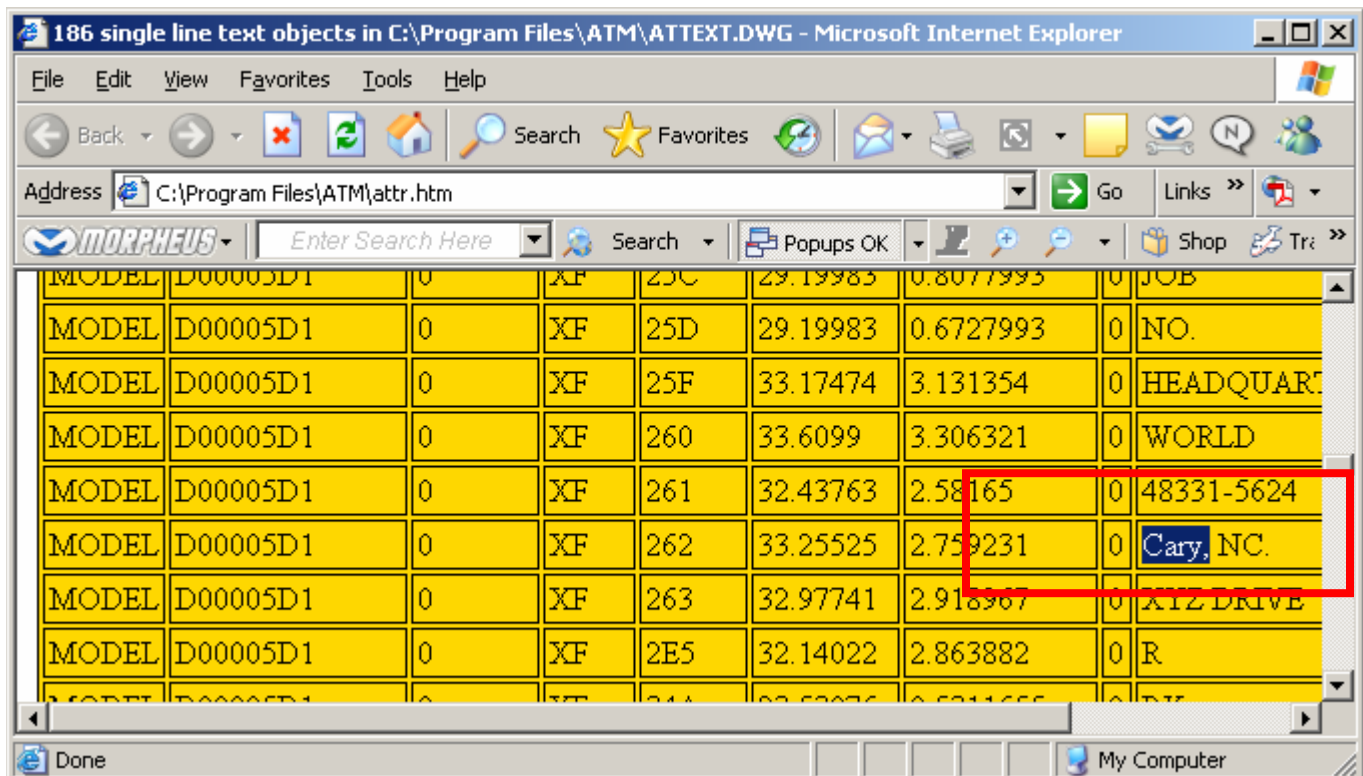
- b. Save and close the template file. To set text values containing 'Farmington Hills, MI' to "Cary, NC" click the button **File** on ATM's screen.



- c. Double-click on file **TEMPLATE.DLF** to open it. ATM will use the DLF file to update text values.

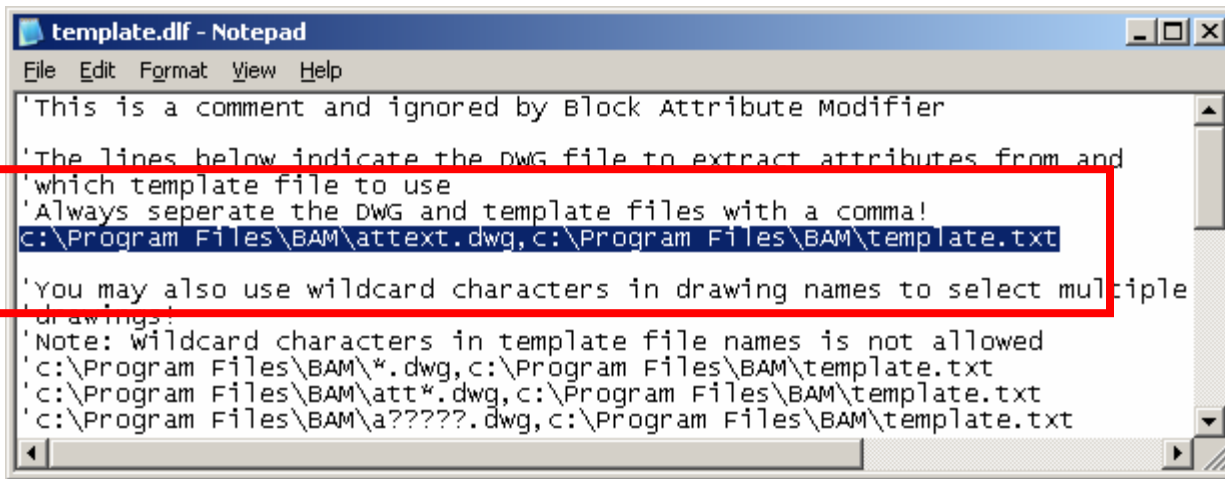


- d. Double-click on drawing **ATTEXT.DWG** to create an open an HTML file containing text values. Scroll to the last column to verify that the text values have been changed to 'Cary, NC'. Scroll down through the HTML file and notice that each occurrence of 'Farmington Hills, MI' has been changed.



- e. By now you are probably wondering "How did file **template.dlf** change the text values?" To learn the answer open file **C:\Program Files\ATM\TEMPLATE.DLF** with a text editor such as Window's

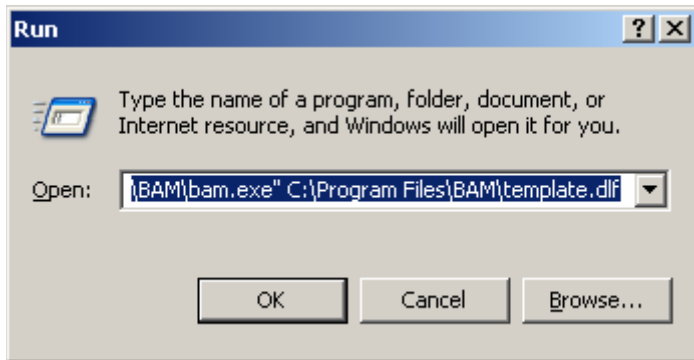
Notepad. The line highlighted below indicates the drawing (or drawings) to be processed and the template file to use. There is no limit to the number of drawings you can enter into the DLF file. You can even use wildcard characters ‘*’ and ‘?’ for drawing names! If you’d like ATM to close after processing the DLF use the word **End** at the bottom of the file.



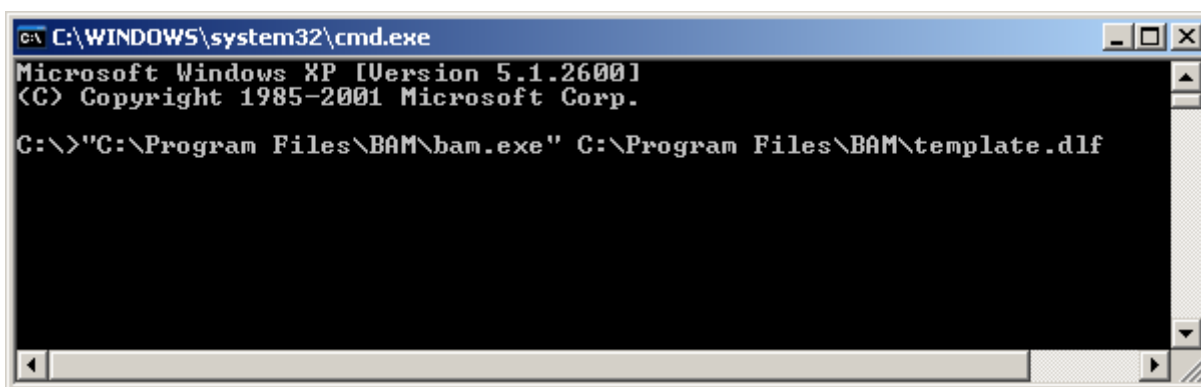
6. Processing a DLF file from the command prompt

Using Windows's there are two methods:

- a. Click Window's Start Button > Run... and enter "**C:\Program Files\ATM\Atm.exe**" **C:\Program Files\ATM\template.dlf** then click the OK button. Note the double quotes surrounding **C:\Program Files\ATM\Atm.exe** which are necessary because of the space between the word **Program** and **Files**.

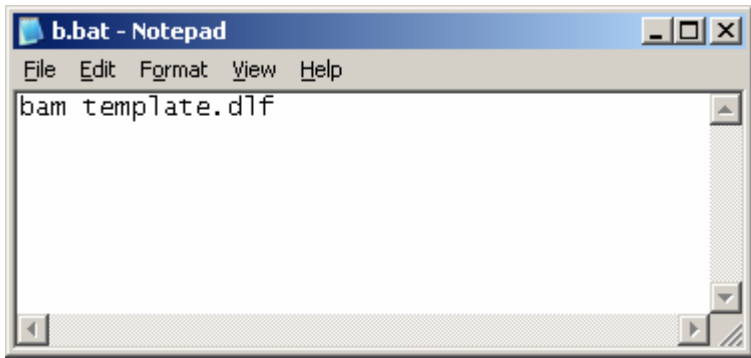


- b. Click Window's Start Button > Run... and enter **cmd** to invoke the DOS window. Type "**C:\Program Files\ATM\Atm.exe**" **C:\Program Files\ATM\template.dlf** and press the ENTER key.



7. Running a DLF file from a batch (BAT) file

Open a text editor such as Window's notepad and enter text as such:

A screenshot of a Windows Notepad window. The title bar reads "b.bat - Notepad". The menu bar includes "File", "Edit", "Format", "View", and "Help". The text area contains the command "bam template.dlf". The window has standard Windows window controls (minimize, maximize, close) in the top right corner and a scroll bar on the right side.

```
bam template.dlf
```

Save the batch file in the same directory as the ATM application (folder C:\Program Files\ATM).

Open Window's Explorer and double-click on the batch file to run it.